



47 Greenoak Crescent, Birmingham, B30 2TD
£250,000

ENTRANCE HALL

Door through to living dining room

LIVING ROOM

Double glazed bay window to front aspect, feature fireplace, laminate flooring

KITCHEN DINING ROOM

Double glazed doors and window to rear gardens, fitted with a matching range of floor and wall units with work surfaces over, integrated and free standing appliances

FIRST FLOOR LANDING

Loft access, carpet flooring

BEDROOM

Double glazed window, carpet flooring

BEDROOM

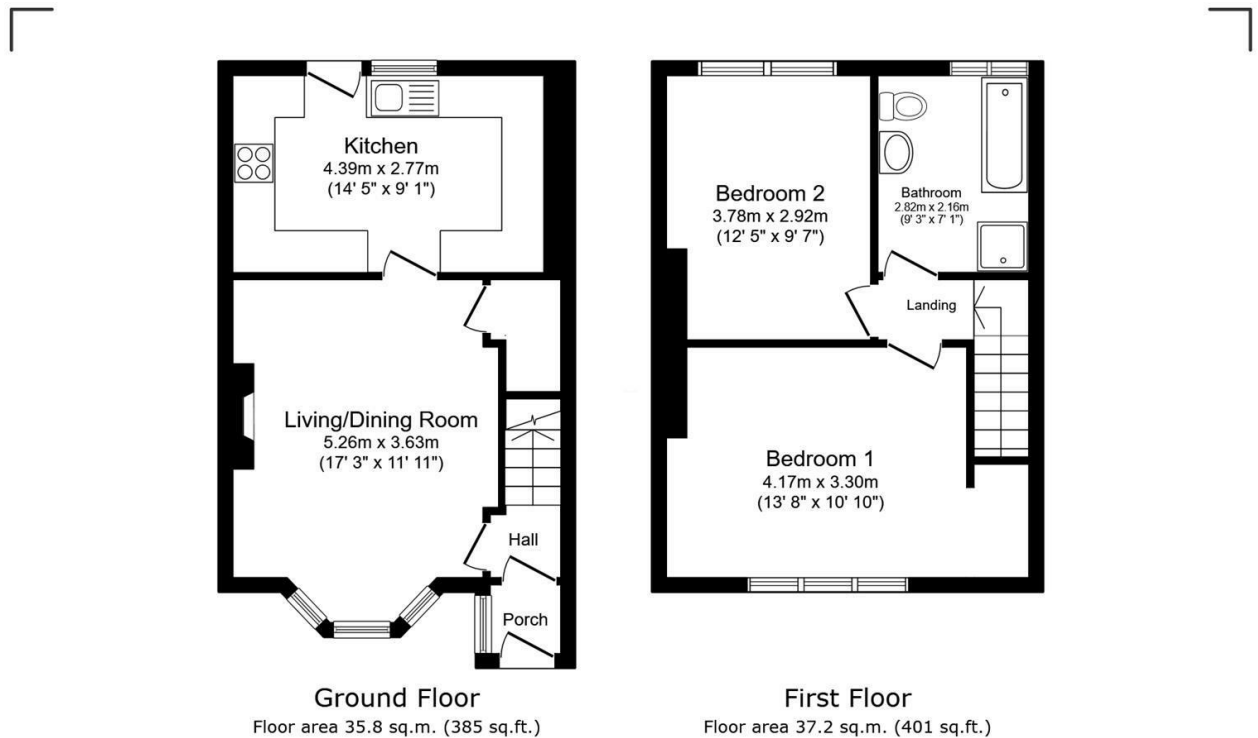
Double glazed window, carpet flooring

BATHROOM

Frosted double glazed window, tiled flooring, tiled walls, matching bathroom suite

OUTSIDE

Large rear gardens laid mainly to lawn, driveway parking for two to three vehicles



Total floor area: 72.0 sq.m. (775.0 sq.ft.)

This floor plan is for illustrative purposes only. It is not drawn to scale. Any measurements, floor areas (including any total floor area), openings and orientations are approximate. No details are guaranteed, they cannot be relied upon for any purpose and do not form any part of any agreement. No liability is taken for any error, omission or misstatement. A party must rely upon its own inspection(s). Powered by www.PropertyBox.io